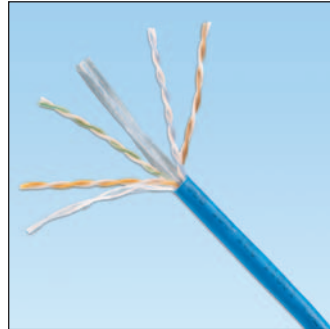


## specifications

The category 6 cable meets IEC 61156-5 and ANSI/EIA/TIA-568-B.2-1 Category 6 component standards. The conductors are 24 AWG with HDPE insulation. The copper conductors are twisted in pairs and all four pairs are covered by a flame retardant PVC jacket, separated by a cross-divider.



## technical information

<b>Electrical performance:</b>	Certified channel performance in a 4-connector configuration up to 100 metres and meets ISO 11801 2nd Edition Class E and ANSI/EIA/TIA-568-B.2-1 Category 6 ratified standards
	Certified component performance up to 100 metres and meets the component requirement of IEC 61156-5 and ANSI/EIA/TIA-568-B.2-1 Category 6 ratified component standards
<b>Conductors/insulation:</b>	24 AWG solid copper insulated with HDPE
<b>Flame rating:</b>	UL 1685
<b>Installation tension:</b>	110 N (25 lbf) maximum
<b>Temperature rating:</b>	0 to 50°C (32 to 122°F) during installation -20 to 60°C (14 to 140°F) during operation
<b>Cable jacket:</b>	Flame retardant PVC
<b>Cable diameter:</b>	5.7mm nominal
<b>Cable weight:</b>	9.9 kg/305m
<b>Packaging:</b>	305m, 11.3 kg/305m Packaging tested to ISTA Procedure 1A

## key features and benefits

<b>“Descending length” cable markings</b>	Easy identification of remaining cable reduces installation time and cable scrap
<b>Cross-divider</b>	Separates pairs for robust cable performance
<b>Easy payout box</b>	Ensures proper performance and provides quick installation

## applications

NETKEY™ Category 6 UTP Copper Cable is interoperable and backwards compatible. With certified performance to the ISO 11801 2nd Edition Class E and ANSI/EIA/TIA-568-B.2-1 Category 6 standards, the NETKEY™ Category 6 Copper Cabling System will

support the following applications:

- Ethernet 10BASE-T, 100BASE-T (Fast Ethernet), 1000BASE-T (Gigabit Ethernet), 10000BASE-T
- 155 Mb/s ATM, 622 Mb/s ATM, 1.2 Gb/s ATM
- Token Ring 4/16

### NETKEY™ UTP Copper Cable

**CM:** LSC60BU-04

### NETKEY™ Category 6 UTP Jack Module

**Jack module:** NK688M\*Y

### NETKEY™ Category 6 UTP Patch Cords

**1 metre:** NK6PC1M\*\*Y  
**2 metres:** NK6PC2M\*\*Y  
**3 metres:** NK6PC3M\*\*Y  
**5 metres:** NK6PC5M\*\*Y

### NETKEY™ Category 6 Punchdown Patch Panels

**12-port:** NK6PPG12WY  
**24-port:** NK6PPG24Y  
**48-port:** NK6PPG48Y

### Cable Prep Tools

**Conductor snipping tool:** CWST

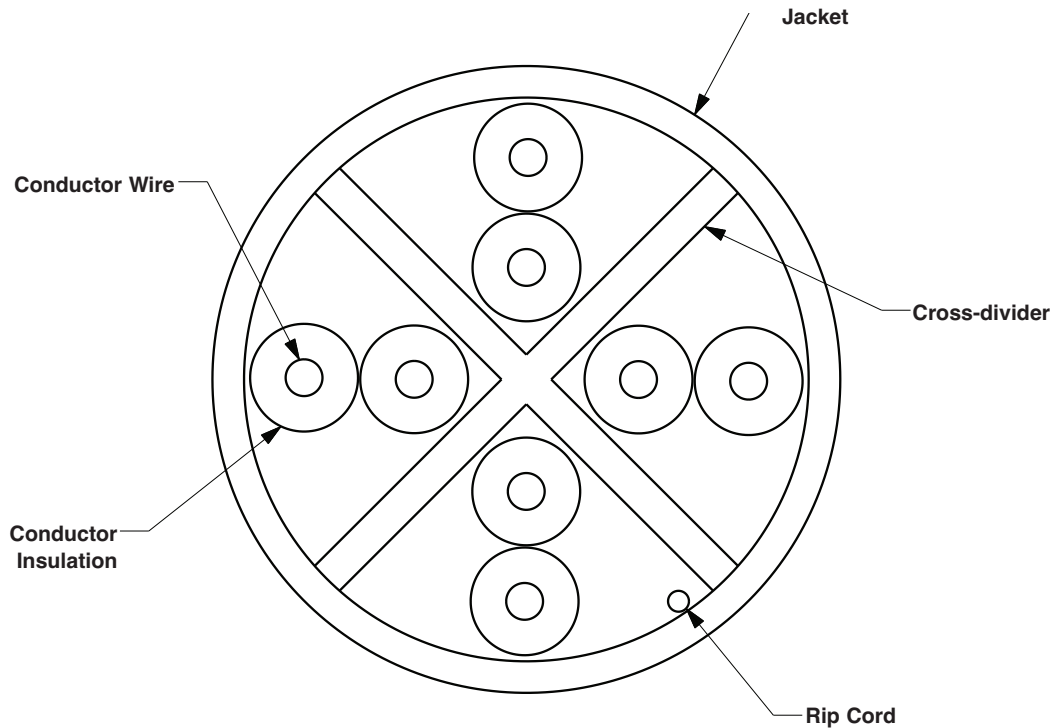
**Conductor stripping tool:** CJUST

\*To designate colour, add suffix IW (Off White), EI (Electric Ivory), IG (International Grey), WH (White), BL (Black), OR (Orange), GR (Green), BU (Blue), RD (Red), and YL (Yellow).

\*\*For standard cable colours other than IW (Off White) substitute suffix with GR (Green), YL (Yellow), RD (Red), and BU (Blue).

## Additional Specifications

Mechanical Test	
Ultimate Breaking Strength	>400 N
Minimum Bend Radius	4 x cable diameter
Electrical Test at 20°C per ASTM D4566	
DC Resistance	<9.38 Ohm per 100m
DC Resistance Unbalance	<5%
Mutual Capacitance	<5.6 nF per 100m at 1 kHz
Capacitance Unbalance	<330 pF per 100m at 1 kHz
Characteristic Impedance	100 Ohm +/- 15% up to 100 MHz
Nominal Velocity of Propagation (NVP)	>62.1%



### WORLDWIDE SUBSIDIARIES AND SALES OFFICES

**PANDUIT CANADA**  
Markham, Ontario  
cs-cdn@panduit.com  
Phone: 800.777.3300

**PANDUIT EUROPE LTD.**  
London, UK  
cs-emea@panduit.com  
Phone: 44.20.8601.7200

**PANDUIT SINGAPORE PTE. LTD.**  
Republic of Singapore  
cs-ap@panduit.com  
Phone: 65.6305.7575

**PANDUIT JAPAN**  
Tokyo, Japan  
cs-japan@panduit.com  
Phone: 81.3.3767.7011

**PANDUIT LATIN AMERICA**  
Jalisco, Mexico  
cs-la@panduit.com  
Phone: 52.333.777.6000

**PANDUIT AUSTRALIA PTY. LTD.**  
Victoria, Australia  
cs-aus@panduit.com  
Phone: 61.3.9794.9020

For a copy of PANDUIT product warranties, log on to [www.panduit.com/warranty](http://www.panduit.com/warranty)



For more information  
Visit us at [www.panduit.com](http://www.panduit.com)  
Contact Customer Service by email:  
[cs-emea@panduit.com](mailto:cs-emea@panduit.com)

©2008 PANDUIT Corp.  
ALL RIGHTS RESERVED.  
**WW-NKSP08-GB**  
5/2008